



Semaphore T-BOX Lite

T-BOX Lite is an all-in-one package that brings an integral Web server, push communications, and reporting via email and SMS text messaging to small monitoring and control applications. Our compact, standard design and innovative technology enable real-time access, anywhere, with a mobile phone, PC, or PDA to create a highly cost-effective solution.



T-BOX Lite — A compact solution for monitoring and control

T-BOX Lite is an ideal solution for small applications requiring up to 32 I/O points. This self-contained system gives you everything needed to create high-performance yet economical monitoring and control installations.

Semaphore's innovative push and Web server technologies open up many new possibilities. Now, you can receive alarms and reports automatically on your cell phone, PDA, or computer. Automatic alarm escalation ensures that all key personnel are fully informed. T-BOX Lite not only stores live and historical information, it also maintains formatted reports and Web pages. Using push technology, it transmits them to multiple recipients as events dictate. No polling is necessary. This capability keeps network traffic to a minimum while reducing the infrastructure and network overhead costs associated with traditional SCADA networks. For typical applications, a SCADA top-end computer system is not even necessary!

T-BOX Lite — Applying Internet and IP technology to monitoring and control

Semaphore's unique capabilities offer new advantages to today's monitoring and control systems. Only T-BOX products provide an integral Web server, push technology, email and IP communications, local alarm management, and internal datalogging.



The T-BOX Lite design includes

Onboard Web server technology eliminates complex, costly SCADA software and expensive HMI displays. Live data, alarms, events, historical reports, and diagnostics are all accessible via a standard Web browser. Multiple clients can connect without costly software licensing fees.

Advanced programming functions include ladder logic (IEC 61131-3 compliant), BASIC, Function Blocks, and Windows menus for configuration of push communications including IP/FTP, email, SMS pager messaging, alarm management, historical reports, trend graphs, and Web pages.

Connectivity — Four ports include the following:

- RS-232 for local configuration and programming
- RS-485 for field devices

- 10/100 Ethernet for IP networking
- Remote communications option: GSM/GPRS ("GE" model), PSTN modem ("PE" model), 2.4 GHz SS Radio ("RE1" model), 900 MHz SS Radio ("RE2" model), Full RS-232 ("SE" model) or none ("E" model)

Compact, rugged package stands up to the harshest environments. Our specially developed alloy enclosure provides noise immunity, wide temperature range operation, and resistance to impact and vibration. It occupies a very small, DIN-rail footprint and mounts without the need for special tools.

Intelligent uninterruptible power supply conditions incoming power and includes an integral battery charger — another feature that eliminates the need and expense associated with an external component.

While T-BOX Lite features push technology, it also drops into traditional SCADA systems, which employ pull (polling) communication using a variety of protocols such as DNP 3.0, IEC 60870-5, Modbus, etc.

To serve a broad range of applications, T-BOX Lite is compatible with Semaphore's range of T-BOX products. Since applications programming and communications are fully compatible across the line, users and integrators can efficiently apply common efforts to all installations. T-BOX MS is a modular, scalable PLC/RTU that caters to applications requiring more communications ports (up to 16 ports) and I/O (up to 800 points). For installations lacking commercial power, T-BOX LP (low power) products operate with small, economical batteries or solar power systems.

Like all T-BOX products, T-BOX Lite includes Semaphore's unique Plug & Go technology, allowing the distribution of your full site configuration on a single MMC card. Maintenance personnel can deploy it without ever switching on a computer.

Receive alarms and control your site using a cellular phone or PDA. T-BOX Lite provides worldwide connectivity for your monitoring and control system.



Enhanced capabilities

T-BOX Lite provides real-time centralization of site data plus powerful reporting and charting capabilities. T-BOX Lite can operate with thin clients and systems without additional software and networking support. In addition, Semaphore offers a suite of software products that provides the system with enhanced capabilities.

Optional T-VIEW software

T-VIEW is an advanced communications front end that uses push and pull technology to automatically process archived information from T-BOX products. T-VIEW features a standard ODBC interface that seamlessly enables real-time data transfer with other software packages. This eliminates the need for costly data historian software and provides access to trending charts and site reports based on your specific criteria. With the optional Dream Report™ plug-in, you can generate statistical reports based on data stored in T-VIEW archives. Dream Report can also be sent to email addresses according to a schedule.

In addition, T-VIEW features automatic RTU detection. As soon as a new station comes into service on the telemetry network, T-VIEW self-configures and introduces definitions for tags, trends, and alarms. If the content of the station changes over time, T-VIEW will automatically adapt to its configuration.

T-BOX Lite configurations

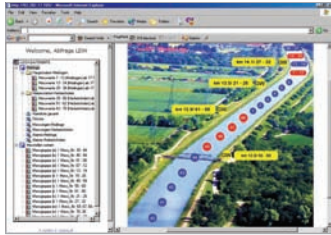
To suit every application, T-BOX Lite is available in three different configurations — each with optimized process I/O. Each model includes RS-232 and RS-485 ports, 10/100 Ethernet, and a choice of GSM/GPRS or PSTN modem.

LT-100 is the most basic, low-cost configuration and includes 2 DI/pulse inputs and 8 DI/DO points.

LT-200 meets a broad range of requirements from building management to process control in water and wastewater treatment systems. I/O includes 6 AI, 2 Pt1000 temperature inputs, 2 DI/pulse inputs, 8 DI/DO, and 4 DO (relay).

LT-201 is designed for solar heating systems and temperature zone monitoring applications. I/O includes 2 AI, 6 Pt1000 temperature inputs, 2 DI/pulse inputs, 8 DI/DO, and 4 DO (relay).

LT-300 is designed for railroad monitoring and other applications that require more analog and digital points but no temperature inputs. I/O includes 8 AI, 2 DI/pulse inputs, 4 DI, 16 DI/DO, and 2 AO.



T-BOX Lite is ideal for small monitoring and control applications in a variety of industries, including building management, railways, traffic control, and water/wastewater.



T-BOX LITE SPECIFICATIONS

Designation	Industrial-grade, all-in-one remote terminal unit (RTU)		
Processor	16-bit Mitsubishi 7.37 MIPS		
Clock	Real-time clock with lithium battery backup		
Memory	Flash	768 KB	
	RAM	148 KB + 256 KB (sampling tables)	
	SD/MMC card	up to 1 GB	
Communication	Ethernet (10/100BaseT) GSM/GPRS, PSTN, Spread Spectrum Radio (900-922 MHz or 2.4 GHz), or RS-232 with full modem control RS-232 Modbus slave (for programming only) — 2 wires (Rxd/Txd) RS-485 — 2 wires		
PSTN modem	300 bps...56 kbps — RJ12 connector ITU-T: V21, V23, V22, V22bis, V32, V32bis, V34, V90, Bell 103, and Bell 212A		
GSM/GPRS modem	Tri-band: EGSM900/DCS1800/PCS1900 Class 10 (4+1/3+2) GPRS with PBCC, SMS, and data support		
Antenna	FME male connector		
Inputs/outputs	LT-100:	2 counter inputs 8 digital inputs or outputs	
	LT-200:	2 counter inputs 8 digital inputs or outputs 6 analog inputs 4/20 mA, 13 bits 2 temperature inputs (Pt1000) 4 relays outputs (230 V ac 3A)	
	LT-201:	2 counter inputs 8 digital inputs or outputs 1 analog input 0-2 mA, 1 analog input 0-20 mA, 13 bits 6 temperature inputs (Pt1000) 4 relays outputs (230 V ac 3A)	
	LT-300:	2 counter inputs 4 digital inputs 16 digital inputs or outputs 8 analog inputs 4-20 mA, 13 bits 2 analog outputs 4-20 mA, 8 bits resolution	
	Push button	RUN-STOP-RESET	
	Programming	Via TWinSoft Suite (automation, Web editor, report editor)	
	Automation languages	Ladder logic (IEC 61131-3), Basic, Function Blocks, C	
	Alarm handling	Smart alarm management with embedded calendar	
	Datalogging	Intelligent logging: sampling tables (instantaneous, min, max, average), digital and analog chronologies, SoE	
	Timestamp resolution	1 second	
	SCADA compatibility	T-VIEW, WIZCON, CITECT, Wonderware (InTouch), iFix, Topkapi, Cube, Labview, Panorama ...	
	Remote upload	Up to firmware level	
	IT features	HTTP, FTP, SMTP (email), SNMP, IP forwarding, DynDNS, NTP ...	
	Protocol support	Support for over 40 drivers including Modbus (master/slave, RTU, TCP, ASCII), DNP 3.0, IEC 60870-5 ...	
Protection	4 levels of authority		
Power supply	20-30 V dc or 12 V dc		
Consumption — Vin 24 V dc	LT-100/LT-200/LT-201	LT-300	
	-E	115 mA	115 mA
	-PE	125 mA	175 mA
	-GE	225 mA	275 mA
Consumption — Vin 12 V dc	LT-100/LT-200/LT-201	LT-300	
	-E	140 mA	140 mA
	-PE	150 mA	200 mA
	-GE	375 mA	375 mA
Voltage V out	12 V dc backed up by external battery		
Current V out	Max 100 mA		
Battery charger	Embedded. Constant current/limited voltage. Max 13.8 V dc		
Connectors	Spring-cage terminal blocks		
Temperature	Storage: -40° to +80°C/-40° to +176°F		
	Working: -20° to +65°C/-4° to +149°F		
Humidity	5-95% noncondensing		
Material	Proprietary aluminum enclosure, anodized and Alodined for corrosion and noise interference resistance		
Approvals	CE, UL/CSA		
EMC	EN61326-1, EN61000-4-2,3,4,6		
EMI emissions	EN55022, EN61326-1		
MTBF	MTBF > 400,000 hours, statement available on request		
Size	Height x depth x width: 150 mm x 83 mm x 29 mm/5.91" x 3.27" x 1.14"		
Weight	300 gr/9.65 oz		

www.cse-semaphore.com

USA

CSE-Semaphore
15B Charron Avenue
Nashua, NH 03063
USA
P +1 (603) 577 3803/3804
F +1 (603) 577 3855

Australia

CSE-Semaphore
Unit 8, 3-5 Gilda Crt
Mulgrave, Victoria 3170
Australia
P+61 (03) 8544 8544
F+61 (03) 8544 8555

Europe

CSE-Semaphore Belgium
Waterloo Office Park - Building "M"
Dreve Richelle, 161
B-1410 Waterloo
Belgium
P +32 (2) 387 42 59
F +32 (2) 387 42 75

© 2008 CSE-Semaphore. All rights reserved. T-BOX, T-VIEW, and Dream Report are trademarks of CSE-Semaphore. All other marks may be trademarks of their respective owners. 0861031 6/09