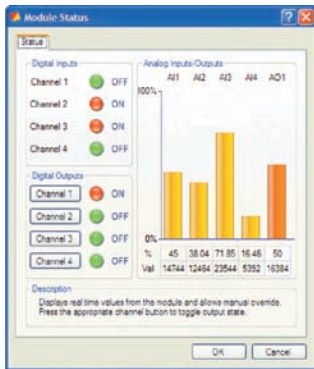


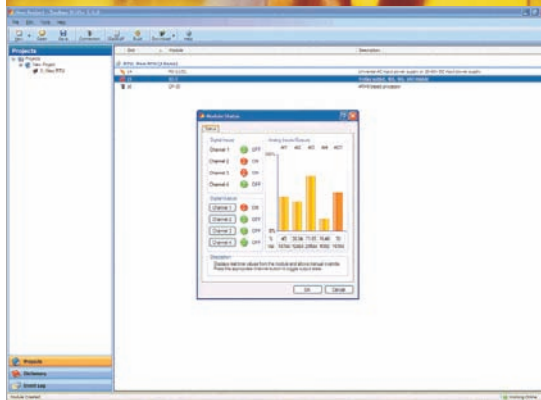


KINGFISHER

Semaphore Toolbox Plus+



Informative dialog boxes allow users to quickly view conditions at a glance.



Toolbox Plus+ is designed to increase applications engineering productivity.

Intuitive, Outlook-style displays are simple to learn.

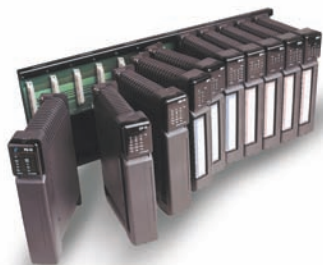
Programming and configuration software

Toolbox Plus+™ is Semaphore's integrated configuration and programming environment for the Kingfisher G30 compact RTU and Kingfisher Plus+ RTU systems that use the 32-bit CP-30 processor module.

Toolbox Plus+ embeds the full suite of five IEC 61131-3 languages and is the first RTU software environment to support ISaGRAF 5 with IEC-61499, the distributed processing and interoperability extension to IEC 61131-3.

Since Toolbox Plus+ is fully integrated, it allows users to view, edit, program, and diagnose their systems without switching back and forth between cumbersome software packages.

An enhanced, Outlook-style graphical user interface makes Toolbox Plus+ intuitive and simple to learn. Intelligent default settings for programming and communications as well as a large array of preprogrammed function blocks greatly simplify addition of new capabilities to Kingfisher RTU solutions.



Toolbox Plus+ is compatible with the Kingfisher G30 RTU and Kingfisher Plus+ RTU models that use the CP-30 processor module.

Semaphore Toolbox Plus+

Programming and configuration software

Toolbox Plus+ is a fully integrated software environment that allows users to configure, program, operate, and maintain a Kingfisher RTU system. Toolbox Plus+ features an intuitive graphical user interface (GUI), embedded IEC 61131-3-compliant and IEC 61499-compliant environment, and the Kingfisher library of functions and function blocks.

Enhanced GUI

Designed to maximize productivity, Toolbox Plus+ incorporates an Outlook-style interface with which Windows users will be familiar. Intuitive drag & drop actions and easy-to-understand graphical representations simplify even the most complex applications programs.

Embedded ISaGRAF IEC 61131-3

Toolbox Plus+ fully embeds the ISaGRAF 5 control software environment and supports all five IEC 61131-3 standard control program languages as well as flow chart. The languages include: structured text (ST), ladder logic (LD), function block diagram (FBD), instruction list (IL), sequential function chart (SFC), and flow chart (FC).

Applications programmers can use any or all of the languages, as needs dictate. In addition, common functionality across languages can significantly increase capabilities as well as productivity. For example, functions and function blocks are available for multiple languages. Users can also mix LD and FBD programming in the same chart.

IEC 61499

IEC 61499 presents guidelines for the use of function blocks to control and manage distributed applications. It provides a means to ensure synchronous operation between devices, and eliminates the need for separate synchronization schemes. It allows for regulation of the flow of control decisions, and provides consistency of data. IEC 61499 removes what had been a burden on applications programmers and tools developers. It significantly eases the development and maintenance of robust, distributed measurement and control systems.

Kingfisher library

In addition to the IEC 61131-3 library of standard functions and function blocks, Toolbox Plus+ includes Semaphore's Kingfisher library, which provides algorithms, calculations, functions, and function blocks that have been proven over thousands of applications. Preprogrammed operations, such as AGA3, AGA7, and AGA8 gross and detail for flow calculations, substantially reduce applications development and project engineering.

www.cse-semaphore.com

U.S.A.

CSE Semaphore Inc.
1200 Chantry Place
Lake Mary, FL 32746
U.S.A.

P +1 (407) 333 3235
F +1 (407) 386 6284

Australia

CSE-Semaphore
Unit 8, 3-5 Gilda Crt
Mulgrave, Victoria 3170
Australia

P +61 (03) 8544 8544
F +61 (03) 8544 8555

Europe

CSE-Semaphore Belgium
Waterloo Office Park — Building "M"
Dreve Richelle, 161
B-1410 Waterloo
Belgium

P +32 (2) 387 42 59
F +32 (2) 387 42 75

© 2008 CSE-Semaphore. All rights reserved. Kingfisher, Kingfisher Plus+, and Toolbox Plus+ are trademarks of CSE-Semaphore. All other marks may be trademarks of their respective owners.
0761036 02/08

COMPUTER REQUIREMENTS

Supported operating systems	Windows 2000, Windows XP, Windows Vista
Minimum computer specifications	PC with 300 megahertz (MHz) or higher processor clock speed recommended; 233-MHz minimum required
	128 megabytes (MB) of RAM or higher recommended
	1.5 gigabyte (GB) of available hard disk space
	Super VGA (800 x 600) or higher resolution video adapter and monitor
	CD-ROM or DVD drive
	Keyboard and mouse or compatible pointing device
	USB port for hardware protection dongle
	10/100 Ethernet port
Software protection	Hardware dongle provided; requires USB port