



Origin Energy Gas Distribution SCADA System

The Client

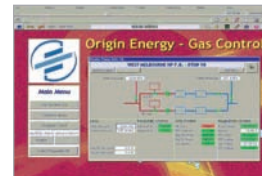
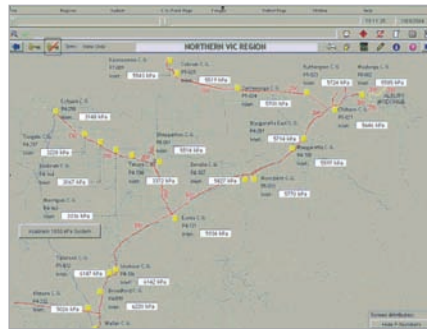
The natural gas distribution system in Victoria Australia is owned by Envestra Ltd. It comprises of over 8,300 Km of natural gas and supplies over 400,000 industrial and residential premises in Melbourne City and regional areas.

The Origin Energy Asset Management (OEAM) Team manages their gas reticulation system using the Kingfisher and Citect SCADA systems telemetry system.

Project Overview

The SCADA & Telemetry Application Kingfisher RTUs are used to monitor and control 118 gas regulator sites within the Melbourne metropolitan and regional areas. These RTUs provide critical gas regulation control and monitoring to sites 24 hours a day where high pressure reduction is required. The Origin Energy Asset Management (OEAM) SCADA control system is located in Thomastown, Melbourne and communicates to regulator sites by using either UHF radio or PSTN (telephone) based communications.

The RTUs provide valuable information back to the SCADA system which includes site pressures, valve positions, site security and other 'on demand' information. This project was successfully engineering and commissioned by Serck Controls Pty Ltd in 2003. Serck are one of Semaphore's authorized System Integrators.



Citect SCADA Gas Control Page and Overview of Northern Region Gas Network

The Solution

The Telemetry system consists of two "Hot Standby" redundant Citect SCADA Servers connected to redundant Kingfisher Master RTUs. The SCADA system provides comprehensive graphical and tabular information (trends, mimics, alarms, etc) with on demand information for all 118 regulator sites using either PSTN or UHF radio communications. SMS and Pager alarms are also provided for alerting management and maintenance staff of critical messages.

U.S.A.
CSE Semaphore Inc.
1200 Chantry Place
Lake Mary, FL 32746
U.S.A.

P+1 (407) 333 3235
F+1 (407) 386 6284

Australia
CSE-Semaphore
Unit 8, 3-5 Gilda Crt
Mulgrave, Victoria 3170
Australia

P+61 (03) 8544 8544
F+61 (03) 8544 8555

Europe
CSE-Semaphore Belgium
Waterloo Office Park — Building "M"
Dreve Richelle, 161
B-1410 Waterloo
Belgium

P+32 (2) 387 42 59
F+32 (2) 387 42 75

© 2008 CSE-Semaphore. All rights reserved. T-BOX, T-VIEW, and Dream Report are trademarks of CSE-Semaphore. All other marks may be trademarks of their respective owners. 0861016 03/08